

# UNSELD Technic

## BIO MASS BALER

### BMP 2212

NEW



#### NEW: Energy requirement only 45 kW

The energy efficiency of the BMP 2212 has been increased by ca. 30%, through the development of a new 'on demand' electro-hydraulic power flow and through the electric motor direct drive on the bale chamber.



## SINGLE OPERATOR PROCESS

### BALED AND SEALED

#### Materials:

- RDF/SRF
- green cut
- Waste Wood chip
- Biomass woodchip
- Shredded domestic waste
- Maize and other feedstuffs

#### Bales are suitable for:

- Material storage (outside for up to 12 months)
- Fermentation

#### Advantages:

- Airtight
- transport of the bales using cost effective means
- Reduction of transport and logistic costs (Volume compaction of ca. 2.5:1)

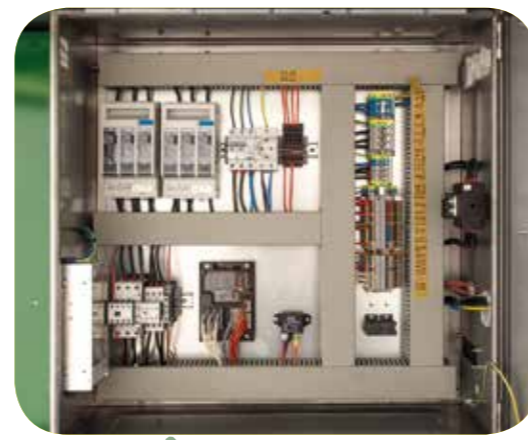
# UNSELD Technic



Opening to chamber/  
filling the chamber



Monitor



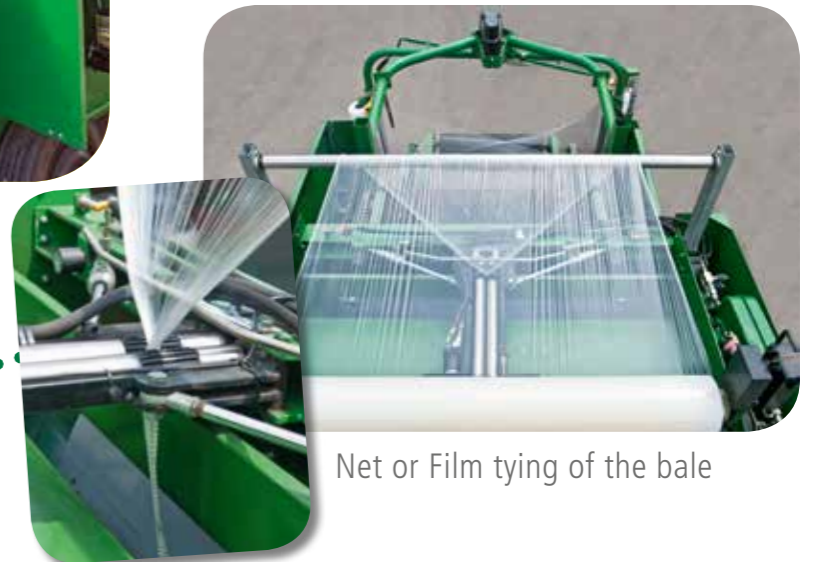
400 Volt Controller



Direct drive of the  
baler chamber



Feed hopper with elevator chain



Net or Film tying of the bale



Transport hitch



All conveyor chains are made  
with HV links



Bale chamber rollers have  
full width shafts (50 mm)  
with exchangeable wear  
bushings



Transport unit



Controller for the  
24 Volt CAN Bus  
Compressor



Wrapper unit

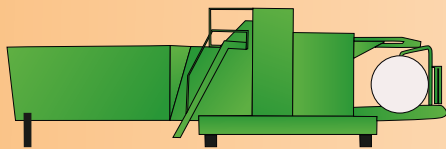
# THE UNSELD BMP 2212 BIO MASS BALER HAS PROVEN ADVANTAGES IN BOTH INDUSTRIAL AND AGRICULTURAL APPLICATIONS

## RECOVERED FUELS: EG. RDF

- One man operating with high output baling
- Cost effective transportation as volume is reduced
- Watertight bales allowing outside storage
- Uniform bales which are easy to stack



## STATIONARY VERSION



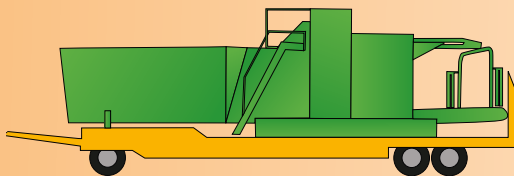
IN OPERATION



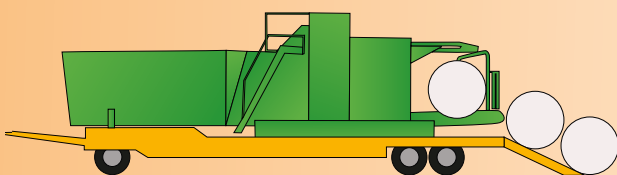
ON SITE MOVEMENT

## MOBILE VERSION

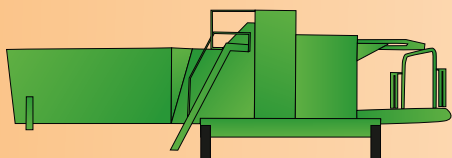
80 km/hr version on a lowloader



ROAD TRANSPORT



IN OPERATION



LOADING ONTO  
A LOWLOADER

### Technical Specification:

- Length:.....ca. 10.00 m
- Width:.....2.50 m
- Height: .....2.80 m
- Weight: ..... ca. 7 t
- Output: ..... 30-50 bales per hour

Due to our continuous development we reserve the right to change the technical specification from the illustrated. The pictures may illustrate the machine with optional extras

# UNSELD Technic

Unsel Technik GmbH & Co. KG

Riedheimer Straße 26  
D-89129 Langenau

Telefon (07345) 92 97 661

Telefax (07345) 92 98 014

info@unsel-technik.de

www.unsel-technik.de